



CHILDREN'S
HEALTHCARE
AUSTRALASIA

Membership Benefits & Services



Enhancing the health and wellbeing of women and newborns by supporting hospitals and healthcare services in Australia to achieve excellence in clinical care.

Published by Children's Healthcare Australasia (CHA):

PO Box 194 Mitchell,
ACT 2911

© Copyright Children's Healthcare Australasia 2018

ISBN: 978-0-646-54376-5

Version: October 9, 2019 4:35 PM

All rights reserved. Except for the purposes of education, fair dealing and use within contributing member hospitals, no portion of this document should be reproduced or copied for any purpose, including general exhibition, lending, resale and hire, without the written consent of CHA.

October 2019

Membership Benefits & Services

2019



The Team



Barb Vernon
Chief Executive
Officer



Leila Kelly
Networking
Coordinator



Elijah Zhang
Benchmarking
Manager



Keith Tin
Benchmarking
Data Analyst



Kelly Eggleston
Executive
Assistant



**Jennifer
Etminan**
Marketing Officer



Nathan McGaw
Member
Communications
Assistant



**Erandi
Goonetilleke**
Member
Communications
Assistant



Gill McGaw
Business Manager



Joanna Webb
Finance Officer



**Michael
Vernon**
Website
Coordinator



Michelle Favier
Events
Coordinator



Adele Kelly
Quality
Improvement
Coordinator



Jack Gooday
CiviCRM Report
Writer

Contents

Current Members	6
Our Vision	8
Benefits	10
Our Governance	12
Benchmarking Program	14
Networking	16
Special Interest Groups	18
Safety & Quality Improvement	22
Advocacy	24
Navigation of Members Community	26
The Next Steps	28
Application to Join	30





We have over
90
member sites in Australia
and New Zealand

NSW

Hunter New England Local Health District:

Armidale Hospital
John Hunter Children's Hospital
Maitland Hospital
Manning Rural Referral Hospital
Tamworth Hospital

Illawarra Shoalhaven Local Health District:

Shoalhaven District Hospital
Wollongong Hospital

Mid North Coast Local Health District:

Coffs Harbour Health Campus

Northern Sydney Local Health District:

Royal North Shore Hospital
Hornsby Ku-ring-gai Hospital

The Sydney Children's Hospital Network:

Children's Hospital at Westmead
Sydney Children's Hospital

Tweed Byron Health Service Group:

Byron District Hospital
Mullumbimby & District War Memorial Hospital
Murwillumbah District Hospital
The Tweed Hospital

VIC

Ballarat Health Service

Barwon Health

University Hospital Geelong

Bendigo Health

Eastern Health:

Angliss Hospital
Box Hill Hospital
Healesville Hospital
Maroondah Hospital

Monash Health:

Casey Hospital
Dandenong Hospital
Monash Children's Hospital

Northern Health:

Northern Hospital

Peninsula Health:

Frankston Hospital

The Royal Children's Hospital

South West Healthcare:

Warrnambool Base Hospital

Western Health:

Sunshine Hospital

Werribee Mercy Hospital

WA

Child & Adolescent Health Service:

Perth Children's Hospital

North Metropolitan Health Service:

Joondalup Health Campus

South Metropolitan Health Service:

Fiona Stanley Hospital

St John of God Health Service:

Midland Public Hospital

WA Country Health Service:

Albany Hospital
Bridgetown Hospital
Broome Regional Hospital
Bunbury Hospital
Busselton Hospital
Carnarvon Hospital
Collie District Hospital
Denmark Hospital
Derby Hospital
Esperance Hospital
Fitzroy Crossing
Geraldton Hospital
Halls Creek Hospital
Hedland Health Campus
Kalgoorlie Health Campus
Karratha Health Campus
Katanning Hospital
Kununurra Hospital
Margaret River Hospital
Narrogin Health Service
Northam Hospital
Warren Hospital
Wyndham Hospital

TAS

Tasmanian Department of Health and Human Services:

Royal Hobart Hospital
Launceston General Hospital
North West Regional Hospital

SA

South Adelaide Local Health Network:

Flinders Medical Centre

North Adelaide Local Health Network:

Lyell McEwin Hospital
Modbury Hospital

The Memorial Hospital

Women's & Children's Health Network

NT

Department of Health NT:

Alice Springs Hospital
Royal Darwin Hospital

QLD

Cairns and Hinterland Hospital and Health Service:

Atherton Hospital
Cairns Hospital
Innisfail Hospital
Mareeba Hospital
Tully Hospital

Children's Health Queensland Hospital & Health Service:

Queensland Children's Hospital

Gold Coast Hospital & Health Service:

Gold Coast University Hospital
Robina Hospital

Mater Health Service:

Mater Children's Private Hospital

Metro North Hospital and Health Service:

Caboolture Hospital
Redcliffe Hospital
The Prince Charles Hospital

Sunshine Coast Hospital and Health Service:

Gympie Hospital
Nambour
Sunshine Coast University Hospital

Townsville Hospital & Health Service:

The Townsville Hospital

Wide Bay Hospital and Health Service:

Hervey Bay Hospital
Bundaberg Hospital
Maryborough Hospital

ACT

ACT Health:

Centenary Hospital for Women & Children

NZ

Auckland District Health Board:

Starship Children's Hospital

Canterbury District Health Board:

Christchurch Hospital





About us

Children's Healthcare Australasia (CHA) is a non-profit community of children's hospitals and paediatric units throughout Australia and New Zealand. Originally established in 1988 as the Association of Paediatric Teaching Hospitals, CHA has a long history of providing support to children's hospitals & paediatric services, and facilitating sharing & learning among healthcare providers about best practice. Since 2011, we have been working under the name 'Children's Healthcare Australasia' in recognition of the whole patient journey across healthcare settings.

CHA recognises that managers and clinicians involved in the care of children and young people face similar challenges, despite each service being unique. We recognise that the expertise for addressing these common challenges, and for coming up with innovative solutions, lies within the member community.

That's why our primary focus is on helping managers and clinicians of paediatric services to network with one another, to share their ideas and expertise efficiently. We facilitate the spread of best practice.

When a health service joins CHA, all managers and clinicians involved in providing care to children and young people are welcome to access to an extensive range of Special Interest Groups (SIGs), face to face networking meetings and our secure members community. These services make it easy to meet and interact with people with similar challenges and responsibilities in other paediatric services. CHA members are generous in sharing their expertise, ideas and lessons learnt through CHA networks. Everyone is motivated by the same thing: making things better for children and their families requiring hospital care.

Our vision at Children's Healthcare Australasia is to enhance the health and wellbeing of children and young people by supporting hospitals and health care services in Australia to achieve excellence in clinical care.



Vision

Our vision is to enhance the health and wellbeing of all children, young people and their families requiring hospital care. Our mission is to support all member organisations to provide children, young people and their families with the highest standard of care possible. At Children's Healthcare Australasia we:

- Identify best practice through performance benchmarking among members
- Support the sharing of information and expertise on health service delivery and quality improvement through member networking
- Showcase innovations that improve clinical outcomes for young people
- Advocate to governments and other stakeholders on issues of common interest to members related to children's healthcare



**CHILDREN'S
HEALTHCARE**
AUSTRALASIA





Our members have access to a valuable range of services and benefits, including:

Networking Opportunities (see page 16-21)

CHA makes it possible for like-minded paediatric care professionals and service managers to easily connect with one another. Our members have exclusive access to an array of Special Interest Groups that allow them to communicate with their peers throughout Australia and New Zealand. These networks communicate on line, via teleconference, and in annual face to face events.

Benchmarking Services (see page 14-15)

Benchmarking with peers is a valuable tool for health services seeking to assess the quality, safety and efficiency of the care they provide to young people. CHA offers all member hospitals the opportunity to participate in our benchmarking services. The data collected and shared addresses management of the health service (trends in activity, length of stay, costs per patient episode, etc).

CHA recognises that each paediatric service is unique in terms of the community it serves, the facilities and capabilities it has to offer children and families, and the skill mix of clinical teams. Benchmarks are provided to group services with peers of a similar size and capability, allowing them to compare their performance with similar paediatric hospitals throughout Australia.

Benchmarking reports are published annually, and data is also available via a secure online portal. Benchmarking results help services identify areas where individual performance is strong in relation to peers, as well as areas of improvement.

Quality Improvement (see page 22-23)

Improving the safety & quality of care provided to children and young people is an abiding theme across all of CHA's activities. Many of the Special Interest Groups consider this issue as part of their regular networking, and some SIGs are dedicated specifically to this challenge. CHA also invites prominent experts from across Australia and New Zealand, as well as internationally to share their expertise with our members.

CHA is proud to support a wide range of members, from large specialist hospitals to small rural services throughout Australasia, to network and learn from one another. Our members are united by their dedication to providing excellence in paediatric care.



Advocacy Services (see page 24-25)

CHA is a respected advocate for the paediatric services sector. Government agencies and other stakeholders seek advice from CHA on a wide range of issues related to the provision of paediatric care. CHA consults closely with its members on each issue and can speak on behalf of the sector without the restrictions that can apply to individuals employed by a given health service. We take this responsibility seriously and ensure that all advice or advocacy provided is credible, factual and informed by our members. Copies of CHA submissions and media releases are published on our website.

A rich array of information & resources from peer services (see page 26-27)

CHA members generously share ideas, advice, resources, images, videos, tools and other resources specific to paediatric healthcare through our secure online member's community.





Our Governance

President

Mr John Stanway
Chief Executive Officer
The Royal Children's Hospital Melbourne, VIC

Vice Presidents

Ms Emma Maddren
General Manager
Starship's Children's Hospital, NZ

Dr Annie Moulden
Clinical Lead Medical Safety & Quality
Royal Children's Hospital Melbourne, VIC

Board Members

Mr Clinton Griffiths
Nurse Unit Manager
Ballarat Health Services, VIC

Dr Paul Craven
A/Executive Director
Children, Young People & Families Services
Hunter New England Kids Health, NSW

Dr Carola Wittekind
Staff Specialist Paediatrician
Royal North Shore Hospital
Northern Sydney Local Health District, NSW

Prof Michael Brydon
Chief Executive Officer
Sydney Children's Hospital Network, NSW

Mr Sean Turner
Director of Pharmacy
Women's & Children's Health Network, SA

Ms Nicola Scott
Clinical Nursing Manager
Christchurch Hospital, NZ

Children's Healthcare Australasia exists wholly because of the dedication and passion of all of us as clinicians, managers and administrators for improving the health and well being of children and young people.



Letter from the president

Children's Healthcare Australasia is a not for profit organisation that exists wholly because of the dedication and passion of all of us as clinicians, managers and administrators for improving the health and well being of children and young people. Through CHA we share information, resources and ideas in a community of trust and common interest. The value of this community of interest has never been stronger than in the current climate of significant change and challenge.

John Stanway

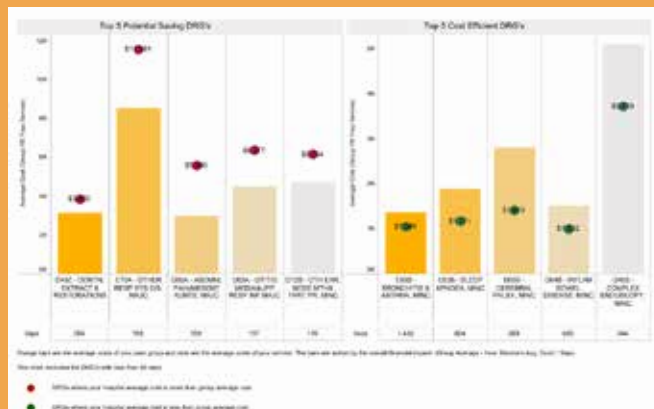
President

Children's Healthcare Australasia



We are pleased to welcome our new president of CHA, John Stanway, who was appointed in June 2019. John Stanway is the current CEO at The Royal Children's Hospital in Melbourne. John has also managed Monash Medical Centre, was Chief Executive of the Transport Accident Commission and held various senior management roles at General Motors Holden. John has a double major in Economics and a Graduate Diploma in Industrial Relations and is a Fellow of the Australian Institute of Company Directors. John was also President of the Victorian Hospitals Industrial Association and Chairman for 10 years. John is currently a Board Director of The Royal Children's Hospital Foundation, Victorian Comprehensive Cancer Centre Ltd and Murdoch Children's Research Institute.





One of the newest innovations is the inclusion of the summary chart for the potential cost saving DRGs for your service. You can see at a glance areas of potential opportunities to make efficiency savings in comparison to your peers.

Overview

CHA's Benchmarking Program supports participating member services to optimise their care of children and young people by comparing a range of indicators among member hospitals and paediatric units of similar size and capacity across Australia and New Zealand. It provides information that might not otherwise be apparent at the service level in helping members to identify their strengths and opportunities for improvement.

CHA assists members to connect with peers who have achieved positive results in those areas and create a platform to share learning across organisations. CHA invites services that are performing well on a given indicator or patient group to share their achievement with other services. We find all members are generous in sharing insights, expertise, tools and resources related to a new models of care or other improvements with their peers.

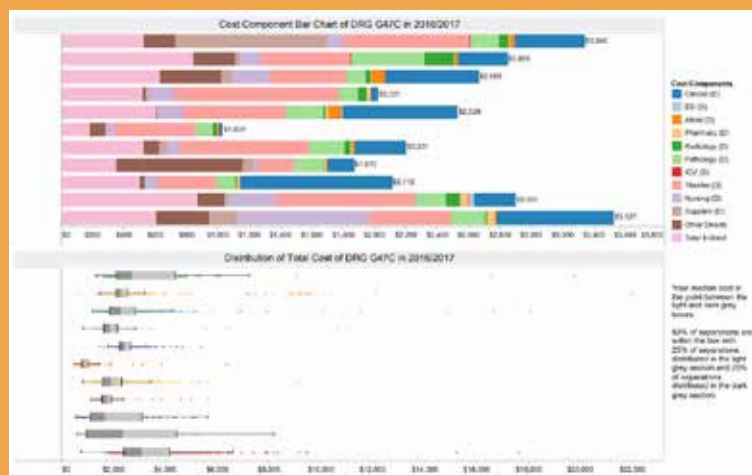
Activity & Costing

CHA's Activity and Costing Report presents inpatient activity in children's hospitals and paediatric units throughout Australia and New Zealand using coded DRG data. With 81 paediatric services participating in the latest benchmarking exercise, the results have now become increasingly robust and revealing.

The report includes summary tables and charts for selected DRGs on:

- Number of separations
- Average length of stay by diagnosis and complexity
- Long stay rate (> 21 days)
- Urgent re-admission rate within 28 days
- Same day admission rate
- Average cost in terms of separation per diagnosis, bed days or National Weighted Activity Unit (NWAU)
- Average cost against National Efficient Price for 40 most common DRGs

We have also provided more detailed breakdown of cost allocations and outliers to enable you to identify the drivers behind any result which is at odds with peer services.



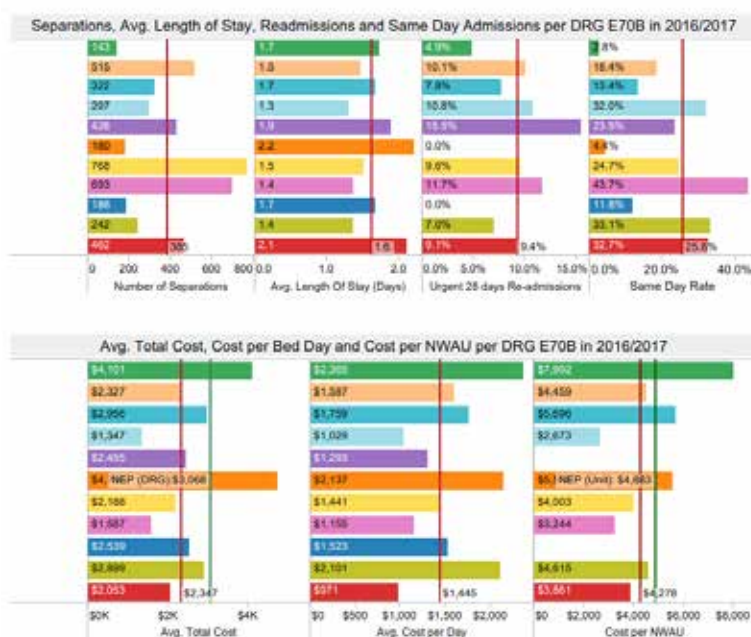
Dashboard Indicators

CHA Dashboard indicators are devised to monitor both clinical effectiveness and efficiency. The indicators allow service managers to pinpoint areas of their service's performance that may warrant further investigation or action.

Paediatric units dashboard indicators are grouped into relevant categories. They comprise of both quarterly reported indicators and annually reported indicators.

CHA designs this dashboard to assist members to quickly identify how their service is performing in comparison with peer services in terms of separation, length of stay, same day admission, urgent readmission rate within 28 days and average cost. An example of the data presented can be seen to the right.

E70B Whooping Cough and Acute Bronchiolitis, Minor Complexity





Overview

When a health service joins CHA all staff involved in its paediatric care have access to an extensive range of Special Interest Groups (SIGs) and face to face events that can be accessed through the members community. These services make it easy to meet and interact with people with similar challenges and responsibilities in other paediatric services.

CHA members are generous in sharing their expertise, ideas and lessons learnt through CHA networks. Everyone is motivated by the same thing: making things better for children and their families requiring hospital care.

Events

CHA hosts meetings, webinars, and workshops both in person and online, that are dedicated to our members. The program for each meeting is designed in close consultation with the participants, with a focus on providing opportunities to consider common challenges and share innovations. The opportunity to meet once a year face to face with peers lays a strong foundation for online and teleconference networking throughout the year.

Online Members Community

Members of WHA have secure access to our online Members Community, where all of our members are able to post, view, and comment on content shared in our Special Interest Groups. Members also have the opportunity to post questions and have them answered by a community of dedicated healthcare professionals. There is now a powerful search engine as well to make it easy to find material relevant to your service or interest.



Special Interest Groups

SIGs enable individuals to readily connect with colleagues and peers who share a passion for excellence in one or more areas of women's healthcare. Our networks are dynamic, solution focused and typically multidisciplinary. Participants generously share expertise, ideas, examples of best practice, and challenges with one another. Our groups are open to all interested staff from member hospitals.

Check out all the Special Interest Groups we have to offer (page 18 - 21).

SPECIAL INTEREST GROUPS

"All staff of member paediatric services are welcome to participate in Special Interest Groups. Share the challenges, test ideas, learn about successes, share tools & resources. Be inspired by logging in to our Member's Community."





Allied Health

A multidisciplinary group of Allied Health professionals/leaders covers many aspects of both maternal and child focused care. Topics discussed include:

- Improving access to allied health through telehealth services
- Data, does it Matter? Linking DRG, demographics and allied health interventions to better target allied health services
- Intro of NDIS hospital service coordinators. The changing role of hospitals in coordinating NDIS services for children and families



Child & Adolescent Mental Health

A multidisciplinary network with a focus on sharing models of care and resources. With rising demand, there is further need to collaborate to deliver high quality integrated care. Topics discussed recently include:

- Multidisciplinary discussion on the increase of dysregulated behaviours in the paediatric ward
- Autism Spectrum Disorder & Intellectual Disability
- Models of care for bringing mental health expertise into general paediatric wards



Child & Family Centred Care

This SIG is focused on improving the involvement and engagement of children & their families in the design and delivery of paediatric healthcare services.

Topics covered include:

- Strategies your service is using to share patient stories with clinicians and senior management
- Responsibilities of institutions for the implementation of Child Safe Standards
- Following the Royal Commission into institutional responses to child sexual abuse
- Challenges of supporting and maintaining consumer engagement
- How are services using Patient Reported Experience Measures (PROM) to drive improvements?



Children's Hospitals Performance & Efficiency

CHA supports tertiary member services to network and share data to enhance efficiency.

Discussions have focused on:

- Opportunities to reduce costs and improve the quality of paediatric care
- Funding issues for Paediatric Services; such as programs for kids with tracheostomies
- Comparing information related to Hospital-Acquired Complications (HACs)
- Participation in the IHPA's costing study on the non-admitted case classification
- Demand for benchmarking on the profile and stratification of hospital workforce



Complex Care

This SIG focuses on patient centred approaches in delivering care for children with complex, chronic comorbidities and their families. Recent areas of discussion have included:

- Family empowerment and education programs
- Effective models of care for hospital avoidance for children
- Insights into Cincinnati Hospital and Milwaukee Special Needs program
- Managing parental expectation, grief, loss and the complex care patient
- In-house education of support workers



Directors of Nursing - Children's Services

This SIG provides an opportunity for Nursing Directors to discuss leadership challenges and initiatives in their services with peers in similar roles. Topics include:

- Leadership opportunities and leadership development for paediatric nursing staff
- Standard 2 - what, why, when and how can we partner with children & families more effectively?
- New graduate programs - building competence in the care of children
- Partnerships, hospital avoidance strategies, community partnerships and family engagement for children with chronic conditions such as asthma
- What information are you currently collecting on your nursing workforce and what is it telling you?



Medication Safety

This multidisciplinary group is involved with developing and progressing paediatric focused medication safety initiatives across Australia & New Zealand. Recent discussions have covered:

- The World Health Organisation's global goal to reduce medication harm by 50%
- Opioid Stewardship – High Risk Drug list development
- National Paediatric Medicines Formulary Project – equity of access to medicines and consistency of treatment
- Safety Alert Forum - sharing of alerts intended to prevent harms to children associated with a medication, technology or devices



NICU & Special Care Nurseries

This is a multidisciplinary group of Nurses, Midwives and Neonatologists focused on enhancing care of newborns and their families in NICU & SCN. Recent topics of discussion include:

- Nasal high flow and considering parental stress
- Nursing workload and financial cost for newborn infants in the non-tertiary setting
- Family Integrated model of care: App development to link neonate incubator to parents via smart phone
- Staffing in rural and remote services
- Central Line Insertion innovations





Paediatric Educators

This SIG creates the opportunity for leading Paediatric Nurse Educators to network about how to embed new policies and research into practice.

- Transitioning nurses trained in care of adults to be safe and confident in the care of children
- New graduates and how to support them – discussion regarding supernumerary, rotation and education
- Post Graduate Programs for paediatric nursing



Paediatric Nurse Unit Managers

This SIG focuses on collaboratively sharing challenges and successes to improve delivery of services for children & families. Recent topics include:

- Companion Guide to Safety & Quality Improvement in Paediatric Care
- EMR – planning, training and challenges
- Parental Escalation of Care
- How to support staff to safely and appropriately respond to children and adolescents with dysregulated behaviour on a paediatric ward



Paediatric Emergency Care

This multidisciplinary group collaborates on challenges and opportunities in Paediatric Emergency Care. Topics discussed recently include:

- The profile of ED workforce caring for children, comparing ratios of medical nursing and allied health per 1,000 paediatric presentation
- Intentional self-harm and assault: hospitalisations and treatment cost of children in Australia over a 10-year period
- The design of the new Australian Emergency Care Classification by IHPA
- Strategies for effectively partnering with children and families amidst the stress of the ED environment



Paediatric Safety & Quality

Members of this group come together to discuss ways of improving the safety and quality of care provided to children. Discussions have focused on:

- The CHA Safety Alert Forum - sharing alerts intended to prevent harms to children associated with a medication, technology or device.
- Implications of the Care Track Kids Study - investigating the standard of healthcare provided to more than 6,600 children across 3 states on 17 common childhood conditions had found significant gaps in the reliability of best practice care
- Reducing readmission: Improving discharge processes
- Companion Guide to Safety & Quality Improvement in Paediatric Care
- CHA Bronchiolitis Improvement Project



Paediatric Units

This group aims to assist leaders of non-tertiary services to develop pathways and relationships to deliver care for children and families. This group continues to support each other during challenging times and to share resources and innovations.

- Bronchiolitis Improvement Project
- Discussion on the Care Track Kids Study - investigating the standard of healthcare provided to more than 6,600 children across 3 states on 17 common childhood conditions
- Parent Escalation of Care Project
- Models of care for engaging mental health professionals in the care of children on general paediatric wards
- Relationships with the ED - patient flow, short stay units and ensuring there is paediatric input to the care of all children



Transition of Care

This SIG brings together people involved in the transition of adolescents with chronic and complex healthcare needs to the adult sector. Areas discussed include:

- Model of Care for transition for children with Autism and Developmental Delay
- Transition Youth Mentors - peer to peer support
- Discussion on identifying young people from vulnerable backgrounds and how best to provide access to health services



To join our members community visit:
<https://members.wcha.asn.au/user/login>





Safety & Quality Improvement

Safety & quality of care for children, young people and their families is an abiding priority for all CHA member services. It is a key priority in CHA's Strategic Plan and underpins all of CHA's benchmarking, networking and advocacy activities.

CHA assists member paediatric services with safety & quality improvement in a number of ways, including through:

- Helping members identify safety & quality issues flagged by the Benchmarking Program, and to connect with peers regarding strategies to mitigate risks or enhance outcomes
- Undertaking benchmarking activities on safety & quality issues of particular concern to members
- Identifying national and international safety concerns related to children's healthcare, sharing alerts about perceived risks and how to mitigate them
- Facilitating detailed discussion and exchange of know how through our Special Interest Groups about safety and quality challenges and successful strategies for improvement
- Providing opportunities for member services to share lessons from adverse events in an environment of mutual trust and respect for the benefit of children and families at all services
- Showcasing innovative approaches to reducing risks of harm and/or enhancing the quality of care to children and families
- Advocating to national and jurisdiction government agencies, to regulators and to manufacturers about issues of concern and risks of harm to children from their policies or products

Many of the innovative approaches to safety & quality improvement are shared by members via our secure online Members Community.

Improvement of the safety & quality of care of children, young people and their families is an abiding priority for CHA. All member services will have access to resources and events which support this priority.



The Companion Guide

Our members have been working together over the past year to develop this workbook. Lots of people with expertise in paediatric care, service management and safety & quality of care for children have contributed to the design of this tool. The Companion Guide to Safety & Quality Improvement in Paediatric Care was created to:

- Support clinical teams - regardless of whether they work in emergency care, outpatients, wards or PICUs
- Identify opportunities to further improve the care being provided to children, young people and their families
- Help us work together in order to make those improvements a reality



It recognises that each clinical team caring for children has a unique context. The facilities available, the space you work in, the systems in place, the people in the team and the group of children and families being cared for are unique to each service. But what they all have in common is that we are all human beings, and as human beings our relationships with one another are important and shape what we can achieve together.





CHA Advocacy

CHA plays an active role in advocating on behalf of children's hospitals and paediatric services on national policies and projects affecting children's healthcare. We develop submissions in consultation with our members on issues of common interest or concern. In the past 12 months our advocacy activities have included the following submissions:



- Submission to the Independent Hospital Pricing Authority on the Consultation re the 2017-18 pricing framework
- A submission to the ACSQHC and Department of Health (Commonwealth) on the need to include child weights on PBS scripts
- CHA issued a media release in response to the NT Children's Commissioner Inquiry into Youth Detention Practices in the Territory in October 2016
- Comment to the Royal Commission into institutional responses to child sexual abuse on records & record keeping practices
- Presence at a stakeholder consultation session and a submission on the National Mental Health Plan



- Submission and representation to the Senate Inquiry into the accessibility of diagnostic imaging services across Australia
- Comment on the NSW Paediatric Service Capability Framework and Companion Toolkit
- Comment on the QLD State-wide Services Plan
- Comment on the ACSQHC Draft Pharmacy Dispensing Labeling Standard
- Circulation of a request for representatives to join the National Collaborative Network for Child Health Informatics





The CHA Members Online Community area includes:

- Special Interest Groups (SIGs)
- Hospital Directory
- Find a Peer
- Upcoming Events
- Events Resources
- Webinar Recordings
- Member Forum Posts
- Paediatric Improvement
- Upload Benchmarking Data

We encourage members to share innovations, collaborate and problem solve within our secure online community.



Accessing the Members Community



Step 1
On the website click 'Login'



Step 2
Type in your email address and password then click 'Go'
OR
Click 'Create a new account' if you don't have an account

Special Interest Groups

The Special Interest Groups (SIGs) area in the new Members Community is easy to access and is a place where information and resources can be shared between contributors.



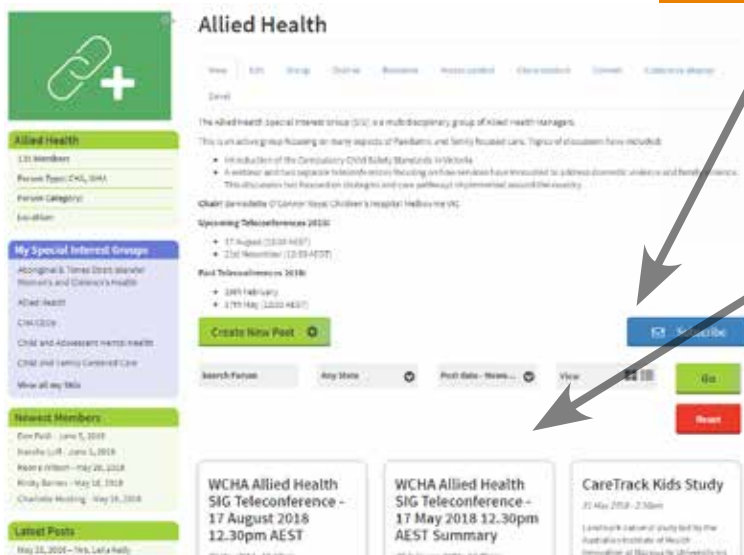
To get to the SIGs, simply click 'Special Interest Groups'.

To find out more about a SIG, click on one.



Click 'subscribe' to join a SIG.

Each SIG contains multiple discussion boards.





How to Connect

1. Contact the CHA Office

Contact the CHA office to discuss our member services and what being a CHA member could mean for your hospital or health service. You can phone, email or visit our website.

2. Share this information with your staff

See what your staff think! Some of your staff will jump at the networking opportunities, others will be interested in the benchmarking data, while more will thank you for access to our events.

3. Site Visit

Sometimes the best way to get what you need is to meet face to face. Here at CHA we recognise that often the best interactions happen in person, so we aim to visit our members, and prospective new members as often as possible. Let us know you are interested and we will make every attempt to come and visit you soon.

4. Apply for Membership

Now that you know what you are missing, don't delay! We have included an application form with this booklet so you can start reaping the rewards of CHA membership as soon as possible. If you would like an electronic version of this form, simply email us at admin2018@wcha.asn.au and we will send you an electronic copy.



New members receive a 10% discount for the first year of membership!



Membership Category		# Annual Paed Seps (under 19 yrs old)	2019-20 Fee \$ (excl GST)
Small	1	< 500	1,190
	2	501-1,000	2,370
	3	1,001-2,000	3,510
	4	2,001-3,000	5,250
	5	3,001-4,000	6,980
Medium	1	4,001-5,000	9,330
	2	5,001-6,000	11,640
	3	6,001-7,000	13,990
	4	7,001-8,000	16,330
	5	8,001-10,000	18,630
Large	1	10,001-15,000	20,970
	2	15,001-20,000	25,500
	3	20,001-30,000	30,260
	4	30,001-40,000	34,910
	5	> 40,000	46,540

How to join & pricing

1. Complete the Application Form

This provides us with information about your service, such as the number of births, number of staff, level/type of facility and key personnel and contacts with the organisation.

2. Invoice for Membership

Once your application is received you will receive an invoice for membership. Our membership fees are based on the annual number of paediatric separations that the facility supported for the previous financial year (pricing pictured left).

3. Engagement in Member Services

Our dedicated team will make contact with your staff to begin engagement with our benchmarking services, networking opportunities, events, education and more!

Hospitals managed under a Local Health Network or District Health Board may aggregate their births and join as a member under the appropriate Membership Category. This makes membership very affordable for even very small paediatric services.





Application to Join Children's Healthcare Australasia

Application to Join

Thank you for your interest in CHA. Please complete this form and return to us at:
Email: admin2018@wcha.asn.au or PO Box 194 Mitchell ACT 2911

Name of Local Health Network or District	
Name(s) of hospitals to be included in CHA Membership	Hospital 1: Hospital 2: Hospital 3:
Total Number of Paed Seps p.a. NB: please indicate number of Paed Seps p.a. at each hospital in your LHN/LHD that will be covered by this membership. These figures will be verified against data submitted & invoices adjusted as appropriate	Hospital 1: Hospital 2: Hospital 3:
Principal Representative Please identify the person willing to become the CHA Principal Representative for your health service. This person will have voting rights for your service at CHA AGMs, and be the key contact CHA will approach for advice about engaging with your health service.	Name: Position: Email: Phone:
Alternative Principal Representative This person will only be contacted in the event that the Principal Representative is away/unavailable.	Name: Position: Email: Phone:
Briefly describe your service: CHA is interested to know the range of services offered by your service. Please tick and complete relevant services your hospital/health service provides.	<input type="checkbox"/> Paed Ward (No. beds:_____) <input type="checkbox"/> Paed ED (Area:_____) <input type="checkbox"/> Paed Surgery <input type="checkbox"/> Special Care Nursery (No. cots:_____)
Membership Category Please see membership categories (page 29)	I authorise an invoice to be sent to my hospital/LHN for CHA Membership in the appropriate membership category for the number of births indicated above.
Person applying for membership on be-half of the hospital/health service Only complete if different from the Principal Representative	Name: Position: Email: Phone:
Invoice Contact If different from above	Name: Email:
Signature: <ul style="list-style-type: none"> I confirm I am authorised to request membership on behalf of my hospital/ health service The hospital understands that membership is considered ongoing, cancellation for a financial year requires 3 months advance written notice I confirm that on membership sign up membership fees become payable within 30 days 	Date:



CHILDREN'S
HEALTHCARE

AUSTRALASIA