

MEMBERSHIP BENEFITS & SERVICES



CHILDREN'S HEALTHCARE

AUSTRALASIA

Enhancing the health and wellbeing of children and young people by supporting hospitals and healthcare services in Australasia to achieve excellence in clinical care.

Published by Children's Healthcare Australasia (CHA):

PO Box 194 Mitchell,
ACT 2911

© Copyright Children's Healthcare Australasia 2018

ISBN: 978-0-646-54376-5

Version: November 22, 2018 1:40 PM

All rights reserved. Except for the purposes of education, fair dealing and use within contributing member hospitals, no portion of this document should be reproduced or copied for any purpose, including general exhibition, lending, resale and hire, without the written consent of CHA.

September 2018

Membership Benefits & Services

2018



The Team



Barb Vernon
Chief Executive
Officer



Leila Kelly
Networking
Coordinator



Leila Kelly
Clinical Network
Manager



Elijah Zhang
Benchmarking
Manager



Keith Tin
Benchmarking
Data Analyst



Kelly Eggleston
Executive
Assistant



**Jennifer
Etminan**
Marketing Officer



Nathan McGaw
Member
Communications
Assistant



**Erandi
Goonetilleke**
Member
Communications
Assistant



Gill McGaw
Business Manager



Joanna Webb
Finance Officer



**Michael
Vernon**
Website
Coordinator



Michelle Favier
Events
Coordinator

Contents

Current Members	6
Our Vision	8
Benefits	10
Our Governance	12
Benchmarking Program	14
Networking	16
Special Interest Groups	18
Safety & Quality Improvement	22
Advocacy	24
Navigation of Members Community	26
The Next Steps	28
Application to Join	30





We have over
80
member sites in Australia
and New Zealand

NSW

Hunter New England Local Health District:

John Hunter Children's Hospital
Armidale Rural Referral Hospital
The Maitland Hospital
Manning Rural Referral Hospital
Tamworth Rural Referral Hospital

Illawarra Shoalhaven Local Health District:

Shoalhaven District Memorial Hospital
Wollongong Hospital

Mid North Coast Local Health District:

Coffs Harbour Health Campus

Murrumbidgee Local Health District:

Wagga Wagga Rural Referral Hospital
Griffith Base Hospital

Northern Sydney Local Health District:

Royal North Shore Hospital
Hornsby Ku-ring-gai Hospital

Sydney Children's Hospital Network:

Children's Hospital at Westmead
Sydney Children's Hospital

NZ

Auckland District Health Board:

Starship Children's Hospital

Canterbury District Health Board:

Christchurch Hospital

VIC

Ballarat Health Services

Bendigo Health

Eastern Health:

Angliss Hospital
Box Hill Hospital
Healesville
Maroondah Hospital

Monash Health:

Monash Children's Hospital
Casey Hospital
Dandenong Hospital

Peninsula Health:

Frankston Hospital

The Royal Children's Hospital

South West Healthcare:

Warrnambool

Western Health:

Sunshine Hospital

WA

South Metropolitan Health Service

Fiona Stanley Hospital

North Metropolitan Health Service

St John of God - Midland Public Hospital

WA Country Health Service:

Albany Hospital
Bridgetown Hospital
Broome Regional Hospital
Bunbury Hospital
Busselton Hospital
Carnarvon Hospital
Collie District Hospital
Derby Hospital
Denmark Hospital
Esperance Hospital
Fitzroy Crossing Hospital
Geraldton Hospital
Hedland Health Campus
Halls Creek Hospital
Kalgoorlie Health Campus
Katanning Hospital
Kununurra Hospital
Margaret River Hospital
Narrogin Hospital
Nickol Bay Hospital
Northam Hospital
Northam Hospital
Warren Hospital
Wyndham Hospital

TAS

Tasmanian Department of Health and Human Services:

Royal Hobart Hospital
Launceston General Hospital
North West Regional Hospital

SA

South Adelaide Local Health Network:

Flinders Medical Centre

North Adelaide Local Health Network:

Lyell McEwin Hospital

Women's & Children's Health Network

QLD

Cairns and Hinterland Hospital and Health Service:

Cairns Hospital

Children's Health Queensland Hospital & Health Service:

Queensland Children's Hospital
(formerly Lady Cilento Children's Hospital)

Gold Coast Hospital & Health Service:

Gold Coast University Hospital
Robina Hospital

Mater Health Service:

Mater Children's Private Hospital

Metro North Hospital and Health Service:

Caboolture Hospital
Redcliffe Hospital
The Prince Charles Hospital

Metro South Hospital and Health Service:

Logan Hospital
Redland Hospital

Sunshine Coast Hospital and Health Service:

Gympie Hospital
Sunshine Coast University Hospital

Townsville Hospital & Health Service:

The Townsville Hospital

Wide Bay Hospital and Health Service:

Hervey Bay Hospital
Bundaberg Hospital
Maryborough Hospital

NT

Alice Springs Hospital

Royal Darwin Hospital

ACT

ACT Health:

Centenary Hospital for Women & Children





About us

Children's Healthcare Australasia (CHA) is a non-profit community of children's hospitals and paediatric units throughout Australia and New Zealand. Originally established in 1988 as the Association of Paediatric Teaching Hospitals, CHA has a long history of providing support to children's hospitals & paediatric services, and facilitating sharing & learning among healthcare providers about best practice. Since 2011, we have been working under the name 'Children's Healthcare Australasia' in recognition of the whole patient journey across healthcare settings.

CHA recognises that managers and clinicians involved in the care of children and young people face similar challenges, despite each service being unique. We recognise that the expertise for addressing these common challenges, and for coming up with innovative solutions, lies within the member community.

That's why our primary focus is on helping managers and clinicians of paediatric services to network with one another, to share their ideas and expertise efficiently. We facilitate the spread of best practice.

When a health service joins CHA, all managers and clinicians involved in providing care to children and young people are welcome to access to an extensive range of Special Interest Groups (SIGs), face to face networking meetings and our secure members community. These services make it easy to meet and interact with people with similar challenges and responsibilities in other paediatric services. CHA members are generous in sharing their expertise, ideas and lessons learnt through CHA networks. Everyone is motivated by the same thing: making things better for children and their families requiring hospital care.

Our vision at Children's Healthcare Australasia is to enhance the health and wellbeing of children and young people by supporting hospitals and health care services in Australia to achieve excellence in clinical care.



Vision

Our vision is to enhance the health and wellbeing of all children, young people and their families requiring hospital care. Our mission is to support all member organisations to provide children, young people and their families with the highest standard of care possible. At Children's Healthcare Australasia we:

- Identify best practice through performance benchmarking among members
- Support the sharing of information and expertise on health service delivery and quality improvement through member networking
- Showcase innovations that improve clinical outcomes for young people
- Advocate to governments and other stakeholders on issues of common interest to members related to children's healthcare





Our members have access to a valuable range of services and benefits, including:

Networking Opportunities (see page 16-21)

CHA makes it possible for like-minded paediatric care professionals and service managers to easily connect with one another. Our members have exclusive access to an array of Special Interest Groups that allow them to communicate with their peers throughout Australia and New Zealand. These networks communicate on line, via teleconference, and in annual face to face events.

Benchmarking Services (see page 14-15)

Benchmarking with peers is a valuable tool for health services seeking to assess the quality, safety and efficiency of the care they provide to young people. CHA offers all member hospitals the opportunity to participate in our benchmarking services. The data collected and shared addresses management of the health service (trends in activity, length of stay, costs per patient episode, etc).

CHA recognises that each paediatric service is unique in terms of the community it serves, the facilities and capabilities it has to offer children and families, and the skill mix of clinical teams. Benchmarks are provided to group services with peers of a similar size and capability, allowing them to compare their performance with similar paediatric hospitals throughout Australia.

Benchmarking reports are published annually, and data is also available via a secure online portal. Benchmarking results help services identify areas where individual performance is strong in relation to peers, as well as areas of improvement.

Quality Improvement (see page 22-23)

Improving the safety & quality of care provided to children and young people is an abiding theme across all of CHA's activities. Many of the Special Interest Groups consider this issue as part of their regular networking, and some SIGs are dedicated specifically to this challenge. CHA also invites prominent experts from across Australia and New Zealand, as well as internationally to share their expertise with our members.

CHA is proud to support a wide range of members, from large specialist hospitals to small rural services throughout Australasia, to network and learn from one another. Our members are united by their dedication to providing excellence in paediatric care.



Advocacy Services (see page 24-25)

CHA is a respected advocate for the paediatric services sector. Government agencies and other stakeholders seek advice from CHA on a wide range of issues related to the provision of paediatric care. CHA consults closely with its members on each issue and can speak on behalf of the sector without the restrictions that can apply to individuals employed by a given health service. We take this responsibility seriously and ensure that all advice or advocacy provided is credible, factual and informed by our members. Copies of CHA submissions and media releases are published on our website.

A rich array of information & resources from peer services (see page 26-27)

CHA members generously share ideas, advice, resources, images, videos, tools and other resources specific to paediatric healthcare through our secure online member's community.





Our Governance

President

Ms Fionnagh Dougan
Chief Executive Officer
Children's Health Queensland Hospital and Health Service

Vice Presidents

Ms Emma Maddren
General Manager
Starship's Children's Hospital
New Zealand

Dr Annie Moulden
Clinical Lead Medical Safety & Quality
Royal Children's Hospital Melbourne
Victoria

Board Members

Prof Patricia Davidson - Immediate Past President
Executive Director
Children, Young People & Families Services
Hunter New England Local Health District
New South Wales

Mr Clinton Griffiths
Nurse Unit Manager
Ballarat Health Services
Victoria, Australia

Dr Carola Wittekind
Staff Specialist Paediatrician
Royal North Shore Hospital
Northern Sydney Local Health District
New South Wales

Mr John Stanway
Chief Executive
Royal Children's Hospital Melbourne
Victoria, Australia

Prof Michael Brydon
Chief Executive Officer
Sydney Children's Hospital Network
New South Wales

Dr Keith Howard
Medical Lead
Children's Health Network Northern
New South Wales

Dr Dimitria Simatos
Director of Paediatrics
Eastern Health
Victoria

Children's Healthcare Australasia exists wholly because of the dedication and passion of all of us as clinicians, managers and administrators for improving the health and well being of children and young people.



Letter from the president

Children's Healthcare Australasia is your not for profit, organisation and exists wholly because of the dedication and passion of all of us as clinicians, managers and administrators for improving the health and well being of children and young people. Through CHA we share information, resources and ideas in a community of trust and common interest. The value of this community of interest has never been stronger than in the current climate of significant change and challenge.

Ms Fionnagh Dougan
President
Children's Healthcare Australasia



Fionnagh Dougan has a long and successful history in leading change in complex healthcare environments and a lifelong commitment to improving children's health. She has been the Chief Executive of Children's Health Queensland since January 2015. Prior to this, she was the Director of Provider Services, Auckland District Health Board (ADHB).





One of the newest innovations is the inclusion of the summary chart for the potential cost saving DRGs for your service. You can see at a glance areas of potential opportunities to make efficiency savings in comparison to your peers.

Overview

CHA's Benchmarking Program supports participating member services to optimise their care of children and young people by comparing a range of indicators among member hospitals and paediatric units of similar size and capacity across Australia and New Zealand. It provides information that might not otherwise be apparent at the service level in helping members to identify their strengths and opportunities for improvement.

CHA assists members to connect with peers who have achieved positive results in those areas and create a platform to share learning across organisations. CHA invites services that are performing well on a given indicator or patient group to share their achievement with other services. We find all members are generous in sharing insights, expertise, tools and resources related to a new models of care or other improvements with their peers.

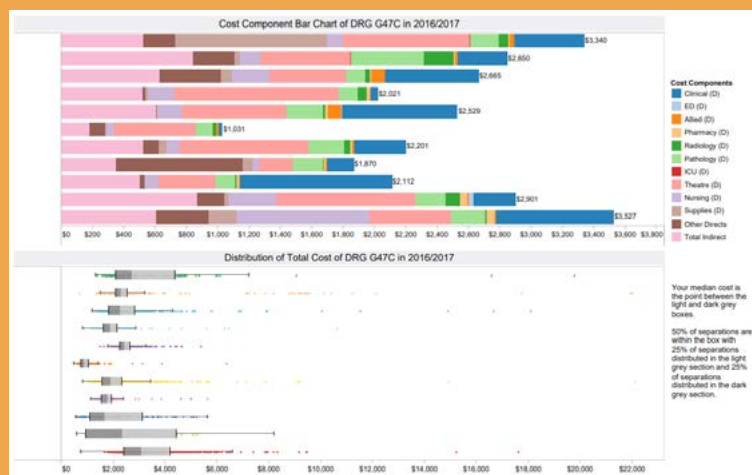
Activity & Costing

CHA's Activity and Costing Report presents inpatient activity in children's hospitals and paediatric units throughout Australia and New Zealand using coded DRG data. With 81 paediatric services participating in the latest benchmarking exercise, the results have now become increasingly robust and revealing.

The report includes summary tables and charts for selected DRGs on:

- Number of separations
- Average length of stay by diagnosis and complexity
- Long stay rate (> 21 days)
- Urgent re-admission rate within 28 days
- Same day admission rate
- Average cost in terms of separation per diagnosis, bed days or National Weighted Activity Unit (NWAU)
- Average cost against National Efficient Price for 40 most common DRGs

We have also provided more detailed breakdown of cost allocations and outliers to enable you to identify the drivers behind any result which is at odds with peer services.



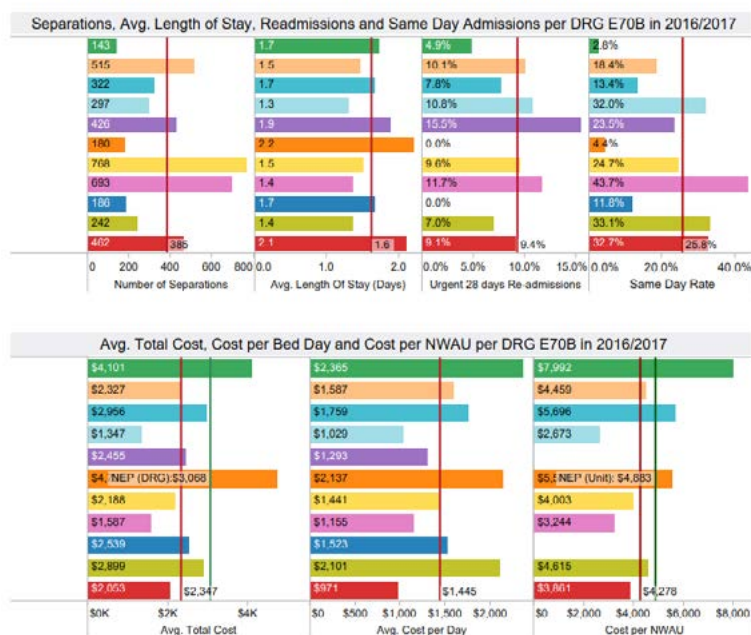
Dashboard Indicators

CHA Dashboard indicators are devised to monitor both clinical effectiveness and efficiency. The indicators allow service managers to pinpoint areas of their service's performance that may warrant further investigation or action.

Paediatric units dashboard indicators are grouped into relevant categories. They comprise of both quarterly reported indicators and annually reported indicators.

CHA designs this dashboard to assist members to quickly identify how their service is performing in comparison with peer services in terms of separation, length of stay, same day admission, urgent readmission rate within 28 days and average cost. An example of the data presented can be seen to the right.

E70B Whooping Cough and Acute Bronchiolitis, Minor Complexity





Overview

When a health service joins CHA all staff involved in its paediatric care have access to an extensive range of Special Interest Groups (SIGs) and face to face events that can be accessed through the members community. These services make it easy to meet and interact with people with similar challenges and responsibilities in other paediatric services.

CHA members are generous in sharing their expertise, ideas and lessons learnt through CHA networks. Everyone is motivated by the same thing: making things better for children and their families requiring hospital care.

Events

CHA hosts meetings, webinars, and workshops both in person and online, that are dedicated to our members. The program for each meeting is designed in close consultation with the participants, with a focus on providing opportunities to consider common challenges and share innovations. The opportunity to meet once a year face to face with peers lays a strong foundation for online and teleconference networking throughout the year.

Online Members Community

Members of WHA have secure access to our online Members Community, where all of our members are able to post, view, and comment on content shared in our Special Interest Groups. Members also have the opportunity to post questions and have them answered by a community of dedicated healthcare professionals. There is now a powerful search engine as well to make it easy to find material relevant to your service or interest.



Special Interest Groups

SIGs enable individuals to readily connect with colleagues and peers who share a passion for excellence in one or more areas of women’s healthcare. Our networks are dynamic, solution focused and typically multidisciplinary. Participants generously share expertise, ideas, examples of best practice, and challenges with one another. Our groups are open to all interested staff from member hospitals.

Check out all the Special Interest Groups we have to offer (page 18 - 21).

SPECIAL INTEREST GROUPS

“All staff of member paediatric services are welcome to participate in Special Interest Groups. Share the challenges, test ideas, learn about successes, share tools & resources. Be inspired by logging in to our Member’s Community.”





Children's Hospitals Performance & Efficiency

CHA supports tertiary member services to network and share regular data relevant to their needs. Discussions have focused on:

- Funding issues for Paediatric Services; such as programs for kids with tracheostomies comparing information related to HACs
- Opportunities to reduce costs and improve the quality of paediatric care



Paediatric Units

This SIG is a multidisciplinary group which works to enable networking between Directors of Paediatrics and Nurse Unit Managers of paediatric units across Australia and New Zealand. Recent topics have included:

- Standardisation of safe care in bronchiolitis; including exploring processes and systems
- Acuity of patients on the ward; and minimum requirements for high dependency care
- Patient transfer data and trends
- Relationship between wards and emergency departments



Allied Health

This is a multidisciplinary group of Allied Health Managers focusing on many aspects of Paediatric and family focused care. Topics discussed include:

- Updating the benchmarking document to reflect NDIS changes in service
- Issues and challenges in NDIS, including; standardising documentation language; referrals back to local area, and national differences regarding NDIS
- Intro of NDIA hospital service co-ordinator



Directors of Nursing

This group is a place where models of care, professional and workforce issues are discussed. Recent topics have included:

- Child Protection – the vulnerable child, safety & quality and cost. How are these vulnerable children being captured; acuity, variance and benchmarking
- Challenges of managing paediatric units across several sites
- Developing and sustaining paediatric nursing workforce



Emergency Care

This multidisciplinary group talk about challenges & opportunities for managing Paediatric Emergency Care. Topics discussed recently include:

- Increasing Child & Adolescent Mental Health presentations. Along with training and de-escalation such as use of Code Grey's
- Effective management of short stay units to improve patient flow and experience
- Examine paediatric injury treatment cost and drivers of childhood injuries over the past 10 years



Child & Adolescent Mental Health

This SIG acknowledges that there is a rising need for greater attention to mental health, particularly in children and adolescents. Topics discussed recently include:

- Recruitment and retention: career pathways and training opportunities for building capacity in child and adolescent mental health care
- Integration with ED – recognition of suicide management within the ED
- Mental Health - ASD and ID



Complex Care

This group focuses on complex care on an individual, organisational and nationwide level. Recent areas of interest have included:

- Family empowerment and education programs
- Use of technology – telehealth and apps
- Changing MoC in RCH – Combining Family choice program, respite care, ACE program
- Collaborative with SCHN & Murrumbidgee – cost and need of care coordination regional



NICU & Special Care Nurseries

This is a multidisciplinary group of Neonatologists, Midwives and Nurses focused on enhancing care of newborns and their families in SCN & NICU. Recent areas of interest include:

- Staffing Ratio – National lack of consistency. Discussion that ratio should be on acuity
- Security arrangements
- Activity and acuity tool
- Achieving family focused integrated care





Children's Hospitals Network

This network supports Executives of the tertiary children's hospitals from across Australia and New Zealand to come together to share insights & know-how related to a wide range of issues relevant to the management of these large and complex services. This network includes Chief Executive Officers, Chief Organisation Officers, Executive Directors of Nursing and Executive Directors of Medical Services.



Nursing Unit Managers

The Nurse Unit Managers Special Interest Group has focused on collaborative problem sharing and solving. Recent discussions have covered:

- Food Service Delivery – allergy management and guidelines
- Infectious patients – single/double room and bed block
- Conflict management – leadership and communication



Child & Family Centered Care

This SIG is focused on improving the involvement & engagement of children & their families in the design and delivery of healthcare services for children. Topics covered include:

- Strategies your service is using to share the patient story – to clinicians, senior management
- Patient story – different methods to be explored such as verbal, drawn, images in sharing the importance of the voice of children
- Tools for collecting and responding to feedback from children and families



Transition of Care

This SIG brings together people involved in the transition of adolescent care to the adult sector. Areas discussed include:

- The creation and formation of processes to ensure transition criteria is being met
- The transition of autistic patients from adolescent to adult care; how to help improve the process



Paediatric Safety & Quality

This SIG assists members to share information and expertise in relation to a wide range of paediatric patient safety and quality issues. Topics discussed include:

- Enhancing safety & quality metrics with a focus on those that are measurable and meaningful and presented in such a way to engage clinicians and minimise harm
- Discussion on measures commonly being used and the potential to share data in a comparable way
- Supporting clinical teams to engage in safety and quality improvement e.g. through use of CHA's new guide



Paediatric Educators

This SIG has followed a topic specific focus to sharing innovation in paediatric education. Recent topics discussed have included:

- Paediatric Education in Emergency Department
- Curriculum development and cost containment
- Mandatory requirements and staff development
- Children specific mandatory requirements



Medication Safety

This multidisciplinary and long standing SIG is involved with developing and progressing paediatric focused medication safety initiatives across Australasia. Recent discussions have covered:

- Medicina EnFit Small Dose Syringe – dead space in the “Moat” – local testing; EnFit – consumer and staff information pamphlet
- Position statement on paediatric prescribing to ensure paediatric weight is always included
- Sharing of learning related to near misses and incidents of harm





Safety & Quality Improvement

Safety & quality of care for children, young people and their families is an abiding priority for all CHA member services. It is a key priority in CHA's Strategic Plan and underpins all of CHA's benchmarking, networking and advocacy activities.

CHA assists member paediatric services with safety & quality improvement in a number of ways, including through:

- Helping members identify safety & quality issues flagged by the Benchmarking Program, and to connect with peers regarding strategies to mitigate risks or enhance outcomes
- Undertaking benchmarking activities on safety & quality issues of particular concern to members
- Identifying national and international safety concerns related to children's healthcare, sharing alerts about perceived risks and how to mitigate them
- Facilitating detailed discussion and exchange of know how through our Special Interest Groups about safety and quality challenges and successful strategies for improvement
- Providing opportunities for member services to share lessons from adverse events in an environment of mutual trust and respect for the benefit of children and families at all services
- Showcasing innovative approaches to reducing risks of harm and/or enhancing the quality of care to children and families
- Advocating to national and jurisdiction government agencies, to regulators and to manufacturers about issues of concern and risks of harm to children from their policies or products

Many of the innovative approaches to safety & quality improvement are shared by members via our secure online Members Community.

Improvement of the safety & quality of care of children, young people and their families is an abiding priority for CHA. All member services will have access to resources and events which support this priority.



The Companion Guide

Our members have been working together over the past year to develop this workbook. Lots of people with expertise in paediatric care, service management and safety & quality of care for children have contributed to the design of this tool. The Companion Guide to Safety & Quality Improvement in Paediatric Care was created to:

- Support clinical teams - regardless of whether they work in emergency care, outpatients, wards or PICUs
- Identify opportunities to further improve the care being provided to children, young people and their families
- Help us work together in order to make those improvements a reality



It recognises that each clinical team caring for children has a unique context. The facilities available, the space you work in, the systems in place, the people in the team and the group of children and families being cared for are unique to each service. But what they all have in common is that we are all human beings, and as human beings our relationships with one another are important and shape what we can achieve together.





CHA Advocacy

CHA plays an active role in advocating on behalf of children's hospitals and paediatric services on national policies and projects affecting children's healthcare. We develop submissions in consultation with our members on issues of common interest or concern. In the past 12 months our advocacy activities have included the following submissions:



- Submission to the Independent Hospital Pricing Authority on the Consultation re the 2017-18 pricing framework
- A submission to the ACSQHC and Department of Health (Commonwealth) on the need to include child weights on PBS scripts
- CHA issued a media release in response to the NT Children's Commissioner Inquiry into Youth Detention Practices in the Territory in October 2016
- Comment to the Royal Commission into institutional responses to child sexual abuse on records & record keeping practices
- Presence at a stakeholder consultation session and a submission on the National Mental Health Plan



- Submission and representation to the Senate Inquiry into the accessibility of diagnostic imaging services across Australia
- Comment on the NSW Paediatric Service Capability Framework and Companion Toolkit
- Comment on the QLD State-wide Services Plan
- Comment on the ACSQHC Draft Pharmacy Dispensing Labeling Standard
- Circulation of a request for representatives to join the National Collaborative Network for Child Health Informatics

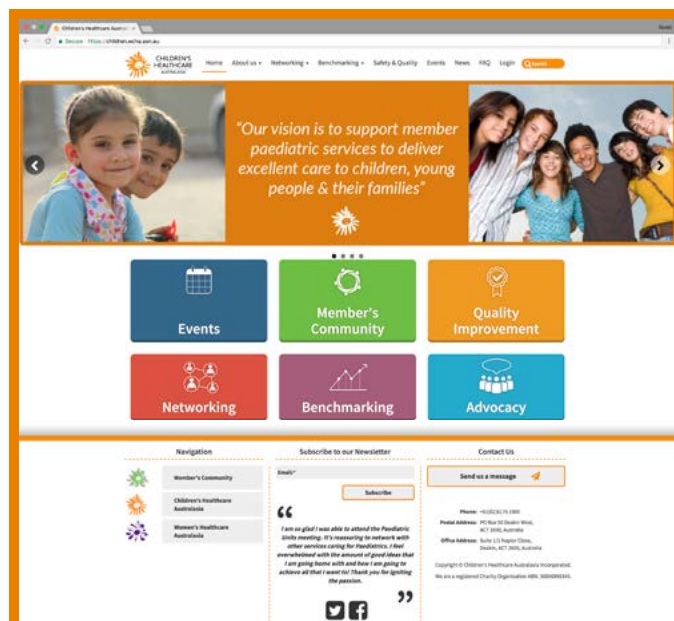




In January, we saw the launch of our new website. The redevelopment has resulted in a new Members Community area that includes:

- Special Interest Groups (SIGs)
- Hospital Directory
- Find a Peer
- Events
- Events Resources

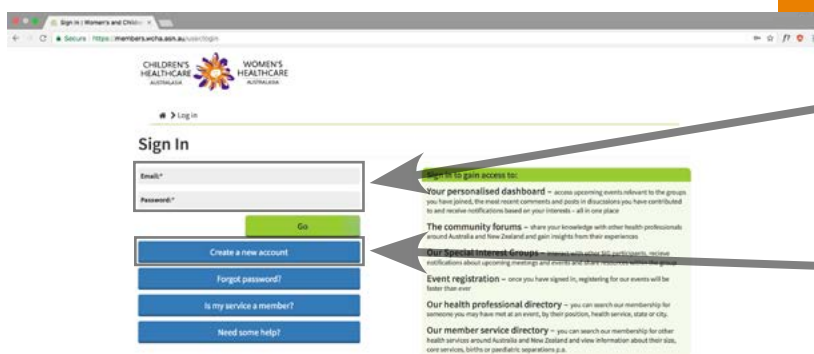
This redevelopment was done for members to increase innovation sharing and collaborative problem solving.



Accessing the Members Community



Step 1
On the website click 'Login'



Step 2
Type in your email address and password then click 'Go'
OR
Click 'Create a new account' if you don't have an account

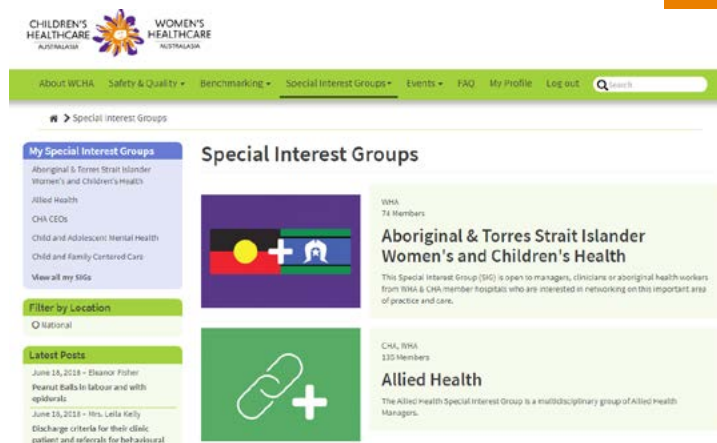
Special Interest Groups

The Special Interest Groups (SIGs) area in the new Members Community is easy to access and is a place where information and resources can be shared between contributors.



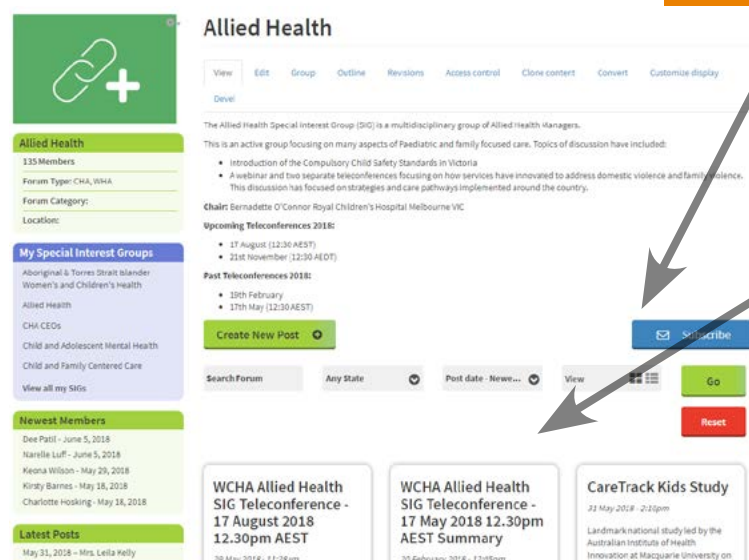
To get to the SIGs, simply click 'Special Interest Groups'.

To find out more about a SIG, click on one.



Click 'subscribe' to join a SIG.

Each SIG contains multiple discussion boards.





How to Connect

1. Contact the CHA Office

Contact the CHA office to discuss our member services and what being a CHA member could mean for your hospital or health service. You can phone, email or visit our website.

2. Share this information with your staff

See what your staff think! Some of your staff will jump at the networking opportunities, others will be interested in the benchmarking data, while more will thank you for access to our events.

3. Site Visit

Sometimes the best way to get what you need is to meet face to face. Here at CHA we recognise that often the best interactions happen in person, so we aim to visit our members, and prospective new members as often as possible. Let us know you are interested and we will make every attempt to come and visit you soon.

4. Apply for Membership

Now that you know what you are missing, don't delay! We have included an application form with this booklet so you can start reaping the rewards of CHA membership as soon as possible. If you would like an electronic version of this form, simply email us at admin2018@wcha.asn.au and we will send you an electronic copy.



New members receive a 10% discount for the first year of membership!



Membership Category		# Annual Paed Seps (under 19 yrs old)	18-19 Fee \$
Small	1	<500	1,150
	2	501-1,000	2,300
	3	1,001-2,000	3,400
	4	2,001-3,000	5,090
	5	3,001-4,000	6,775
Medium	1	4,001-5,000	9,050
	2	5001-6,000	11,300
	3	6,001-7,000	13,575
	4	7,001-8,000	15,850
	5	8,001-10,000	18,080
Large	1	10,001-15,000	20,350
	2	15,001-20,000	24,750
	3	20,001-30,000	29,375
	4	30,001-40,000	33,890
	5	40,001- 55,000	45,180
	6	> 55,000	56,500

How to join & pricing

1. Complete the Application Form

This provides us with information about your service, such as the number of births, number of staff, level/ type of facility and key personnel and contacts with the organisation.

2. Invoice for Membership

Once your application is received you will receive an invoice for membership. Our membership fees are based on the annual number of paediatric separations that the facility supported for the previous financial year (pricing pictured left).

3. Engagement in Member Services

Our dedicated team will make contact with your staff to begin engagement with our benchmarking services, networking opportunities, events, education and more!

Hospitals managed under a Local Health Network or District Health Board may aggregate their births and join as a member under the appropriate Membership Category. This makes membership very affordable for even very small paediatric services.





Application to Join Children's Healthcare Australasia

Name of Local Health Network or District	
Name(s) of hospitals to be included in CHA Membership	Hospital 1: Hospital 2: Hospital 3:
Total Number of Paed Seps p.a. NB: please indicate number of Paed Seps p.a. at each hospital in your LHN/LHD that will be covered by this membership. These figures will be verified against data submitted & invoices adjusted as appropriate	Hospital 1: Hospital 2: Hospital 3:
Principal Representative Please identify the person willing to become the CHA Principal Representative for your health service. This person will have voting rights for your service at CHA AGMs, and be the key contact CHA will approach for advice about engaging with your health service.	Name: Position: Email: Phone:
Alternative Principal Representative This person will only be contacted in the event that the Principal Representative is away/unavailable.	Name: Position: Email: Phone:
Briefly describe your service: CHA is interested to know the range of services offered by your service. Please tick and complete relevant services your hospital/health service provides.	<input type="checkbox"/> Paed Ward (No. beds:_____) <input type="checkbox"/> Paed ED (Area:_____) <input type="checkbox"/> Paed Surgery <input type="checkbox"/> Special Care Nursery (No. cots:_____)
Membership Category Please see membership categories (page 29)	I authorise an invoice to be sent to my hospital/LHN for CHA Membership in the appropriate membership category for the number of births indicated above.
Person applying for membership on be-half of the hospital/health service Only complete if different from the Principal Representative	Name: Position: Email: Phone:
Invoice Contact If different from above	Name: Email:
Signature: <ul style="list-style-type: none"> I confirm I am authorised to request membership on behalf of my hospital/ health service The hospital understands that membership is considered ongoing, cancellation for a financial year requires 3 months advance written notice I confirm that on membership sign up membership fees become payable within 30 days 	Date:



CHILDREN'S
HEALTHCARE

AUSTRALASIA